

**Keywords:** Biliary tract cancer; cisplatin; gemcitabine; ABC-02; quality of life

# Quality of life, long-term survivors and long-term outcome from the ABC-02 study

John Bridgewater<sup>\*1</sup>, Andre Lopes<sup>2</sup>, Daniel Palmer<sup>3</sup>, David Cunningham<sup>4</sup>, Alan Anthoney<sup>5</sup>, Anthony Maraveyas<sup>6</sup>, Srinivasan Madhusudan<sup>7</sup>, Tim Iveson<sup>8</sup>, Juan Valle<sup>9,11</sup> and Harpreet Wasan<sup>10,11</sup> on behalf of the ABC-02 investigators<sup>12</sup>

<sup>1</sup>UCL Cancer Institute, UCL, London WC1E 6DD, UK; <sup>2</sup>UCL and CRUK Clinical Trials Centre, UCL, London W1T 4TJ, UK; <sup>3</sup>Institute of Translational Medicine, University of Liverpool, Liverpool L69 3BX, UK; <sup>4</sup>Department of Medicine, Royal Marsden Hospital, Sutton SM2 5PT, UK; <sup>5</sup>Department of Oncology, St. James's Hospital, Leeds LS9 7TF, UK; <sup>6</sup>Department of Oncology, Castle Hill Hospital, Hull HU16 5JQ, UK; <sup>7</sup>Department of Oncology, Nottingham University Hospitals, Nottingham NG7 2UH, UK; <sup>8</sup>Department of Oncology, Southampton University Hospitals, Southampton SO16 6YD, UK; <sup>9</sup>The University of Manchester, Manchester M20 4BX, UK and <sup>10</sup>Hammersmith Hospital, London W12 0HS, UK

**Background:** The ABC-02 (Advanced Biliary Tract Cancer) study established cisplatin and gemcitabine (CisGem) as the standard first-line chemotherapy for patients with locally advanced or metastatic biliary tract cancer (BTC). We examine quality of life (QoL), describe the long-term survivors and provide a long-term outcome.

**Methods:** A total of 410 BTC patients were randomised to receive either CisGem or gemcitabine alone (Gem); 324 patients consented to complete EORTC QLQ-C30 and EORTC QLQ-PAN26 QoL questionnaires; 268 (83%) patients returned at least one QoL questionnaire (134 in each arm). Long-term survivors were defined as those surviving over 2 years and we performed a final analysis of the primary outcome; overall survival (OS).

**Results:** Most QoL scales showed a trend favouring the combined CisGem arm, including functional and symptomatic scales, although the differences were not statistically significant. Forty-five (11%) patients survived at least 2 years (34 received CisGem and 11 Gem) and 21 (5%) 3 years or more (14 received CisGem and 7 Gem). After a median follow-up of 9.2 months and 398 deaths, the median OS was 11.7 months for CisGem and 8.1 months for Gem (hazard ratio (HR) = 0.65, 95% CI: 0.53–0.79,  $P < 0.001$ ).

**Conclusions:** The survival advantage of CisGem compared to Gem was not associated with an improvement or deterioration of QoL. Long-term survivors were more likely to have received CisGem and the long-term OS is identical to that previously described.

Biliary tract cancers (including cholangiocarcinoma and cancers of the gallbladder and ampulla of Vater, BTC) are uncommon cancers with a poor prognosis (de Groen *et al*, 1999). The standard of care for advanced biliary tract cancers (ABC) was established following publication of the ABC-02 (Advanced Biliary Tract Cancer) trial, which demonstrated that the addition of cisplatin to gemcitabine (CisGem vs Gem) significantly improved overall survival (OS) and

progression-free survival by 3.6 months and 3 months, respectively compared to gem alone (Valle *et al*, 2010). These data were supported by a similar Japanese phase 2 study (Okusaka *et al*, 2010) and a subsequent meta-analysis of these data with ABC-02 (Valle *et al*, 2013).

Maintaining quality of life is a key goal of treatment and impacts on the decision patients make with respect to treatment.

\*Correspondence: Professor J Bridgewater; E-mail: j.bridgewater@ucl.ac.uk

<sup>11</sup>Joint senior authors.

<sup>12</sup>The recruiting sites and principal investigators in the ABC-02 study are listed at the end of the paper.

Received 4 November 2015; revised 12 January 2016; accepted 16 February 2016

© 2016 Cancer Research UK. All rights reserved 0007–0920/16

**Table 1. Cox regression analysis for the association between each QoL response at baseline and overall survival**

QoL response <sup>a</sup>	QoL scores <sup>b</sup>		Overall survival univariate cox models <sup>c</sup>		Overall survival multivariate cox models <sup>c,d</sup>	
	≤ 50 score N (%) <sup>e</sup>	> 50 score N (%)	HR (99% CI) > 50 score vs ≤ 50 score	P-value	HR (99% CI) > 50 score vs ≤ 50 score	P-value
Global health	98 (30%)	157 (48%)	0.59 (0.42–0.83)	<0.001	0.63 (0.44–0.91)	0.001
Social functioning	78 (24%)	176 (54%)	0.78 (0.55–1.12)	0.08	0.93 (0.62–1.40)	0.64
Emotional functioning	61 (19%)	195 (60%)	0.87 (0.59–1.27)	0.34	0.91 (0.60–1.38)	0.57
Cognitive functioning	39 (12%)	217 (67%)	0.86 (0.54–1.35)	0.39	0.93 (0.57–1.52)	0.72
Role functioning	97 (30%)	160 (49%)	0.67 (0.48–0.94)	0.002	0.77 (0.53–1.11)	0.06
Physical functioning	46 (14%)	213 (66%)	0.46 (0.30–0.70)	<0.001	0.56 (0.34–0.92)	0.003
Appetite loss	192 (59%)	65 (20%)	1.60 (1.10–2.34)	0.001	1.42 (0.96–2.10)	0.02
Financial difficulties	210 (65%)	44 (14%)	0.90 (0.58–1.39)	0.54	0.91 (0.57–1.45)	0.59
Nausea and vomiting	244 (75%)	15 (5%)	1.89 (0.93–3.86)	0.02	1.98 (0.94–4.17)	0.02
Pain	200 (62%)	59 (18%)	1.70 (1.15–2.53)	<0.001	1.50 (0.94–2.38)	0.02
Insomnia	180 (56%)	79 (24%)	1.21 (0.85–1.73)	0.16	1.27 (0.85–1.87)	0.12
Fatigue	177 (55%)	82 (25%)	1.49 (1.05–2.12)	0.003	1.39 (0.92–2.10)	0.04
Constipation	217 (67%)	38 (12%)	1.40 (0.88–2.23)	0.06	1.24 (0.71–2.14)	0.32
Diarrhoea	236 (73%)	17 (5%)	0.95 (0.50–1.82)	0.84	0.94 (0.48–1.84)	0.80
Dyspnoea	231 (71%)	27 (8%)	1.21 (0.71–2.08)	0.36	1.23 (0.70–2.14)	0.34
Satisfaction with health care	48 (15%)	204 (63%)	1.15 (0.75–1.76)	0.40	1.15 (0.74–1.80)	0.41
Sexual functioning	102 (31%)	114 (35%)	0.67 (0.47–0.96)	0.005	0.69 (0.46–1.02)	0.01
Digestive symptoms	213 (66%)	43 (13%)	1.67 (1.08–2.59)	0.003	1.42 (0.90–2.25)	0.05
Hepatic	245 (76%)	11 (3%)	1.30 (0.58–2.90)	0.40	1.07 (0.46–2.47)	0.84
Pancreatic pain	199 (61%)	58 (18%)	1.51 (1.02–2.25)	0.007	1.39 (0.90–2.15)	0.05
Body image	220 (68%)	35 (11%)	1.14 (0.71–1.82)	0.48	1.05 (0.65–1.72)	0.78
Altered bowel habit	226 (70%)	29 (9%)	1.05 (0.63–1.75)	0.80	1.04 (0.61–1.77)	0.85

<sup>a</sup>Scores range from 0–100 for all endpoints. For the global health and functional scales (including satisfaction with health care and sexual functioning) 0 indicates poor health and 100 good health. For all other scales, 0 indicates no symptoms and 100 high level of symptoms.

<sup>b</sup>Quality of life forms were only requested from the 324 ABC-02 patients.

<sup>c</sup>Low score QoL response values versus high-score QoL response values.

<sup>d</sup>Adjusted for treatment and baseline covariates: gender, disease status, primary tumour site, tumour histology, ECOG performance status, prior therapy, age group.

<sup>e</sup>Missing data mean that percentages are not 100.

Of particular concern for the ABC-02 study was the potential impact of cisplatin-related fatigue, which numerically increased in the ABC-01 study, the randomised phase 2 study that preceded ABC-02 (Valle *et al*, 2009). Additionally, we wished to document the global impact that any change in episodes of biliary sepsis, a difficult and common problem in BTCs, may have had.

We report quality of life in the ABC-02 study. Additionally we were interested in factors that defined long-term survivors, as we noted that, unlike historical data and clinical experience, there were a number of long-term survivors. We took the opportunity to re-analyse the primary outcome of the ABC-02 study; OS.

## METHODS AND METHODS

**Patients.** A total of 324 patients asked to complete quality of life (QoL) questionnaires as part of the ABC-02 study. The 86 patients enrolled in the ABC-01 study who contributed to the efficacy outcome of the combined ABC-01 and ABC-02 cohort did not complete QoL as this was not part of the randomised phase 2 protocol. Patients had a histopathological or cytological diagnosis of non-resectable, recurrent or metastatic biliary tract carcinoma (intra- or extra-hepatic cholangiocarcinoma), gallbladder or ampullary carcinoma; were aged ≥18 years; had an estimated life expectancy >3 months; ECOG performance status 0–2; and adequate haematological, renal and liver function.

**Treatment.** Patients were treated as described previously (Valle *et al*, 2010). Supportive medications such as anti-emetics were not proscribed and were given at the investigators discretion.

**Quality of life.** All patients were asked to complete the self-completion EORTC Quality of Life Questionnaire-Cancer 30 (EORTC QLQ-C30; Aaronson *et al*, 1993) and EORTC Quality of Life Questionnaire-Pancreatic Cancer 26 (EORTC QLQ-PAN26; Fitzsimmons *et al*, 1999), though this was optional. Quality of life was assessed at baseline, 12 weeks into treatment, one month after the completion of treatment, and 3 and 6 months after the 1 month assessment.

**Statistical methods.** We used the Pearson  $\chi^2$  test and a non-parametric test for trend across ordered groups to assess each baseline characteristic (sex, age, disease status, primary site, histology, ECOG performance status and prior therapy) and treatment for any difference and trend over survival time, respectively. We categorised age into three age groups (23–60, 60–70 and 70–84 years), maintaining a large number of patients in each group and using clinically meaningful age boundaries. We used Kaplan-Meier curves and Cox proportional hazards regression to estimate survival and the hazard ratio (HR) for OS among all patients.

The association between baseline QoL responses and OS was done by categorising the QoL responses (initially on the 0–100 continuous scale) into low scores (≤50 score) or high scores (>50

score). High scores indicate good QoL for functional responses (e.g. physical functioning), but poor QoL for symptomatic responses (e.g. pain). The aim of the analysis is to assess whether having a bad quality of life at baseline is associated with risk of death, and the results suggest that this is the case for some of the scales. We reported univariate and multivariate OS cox model

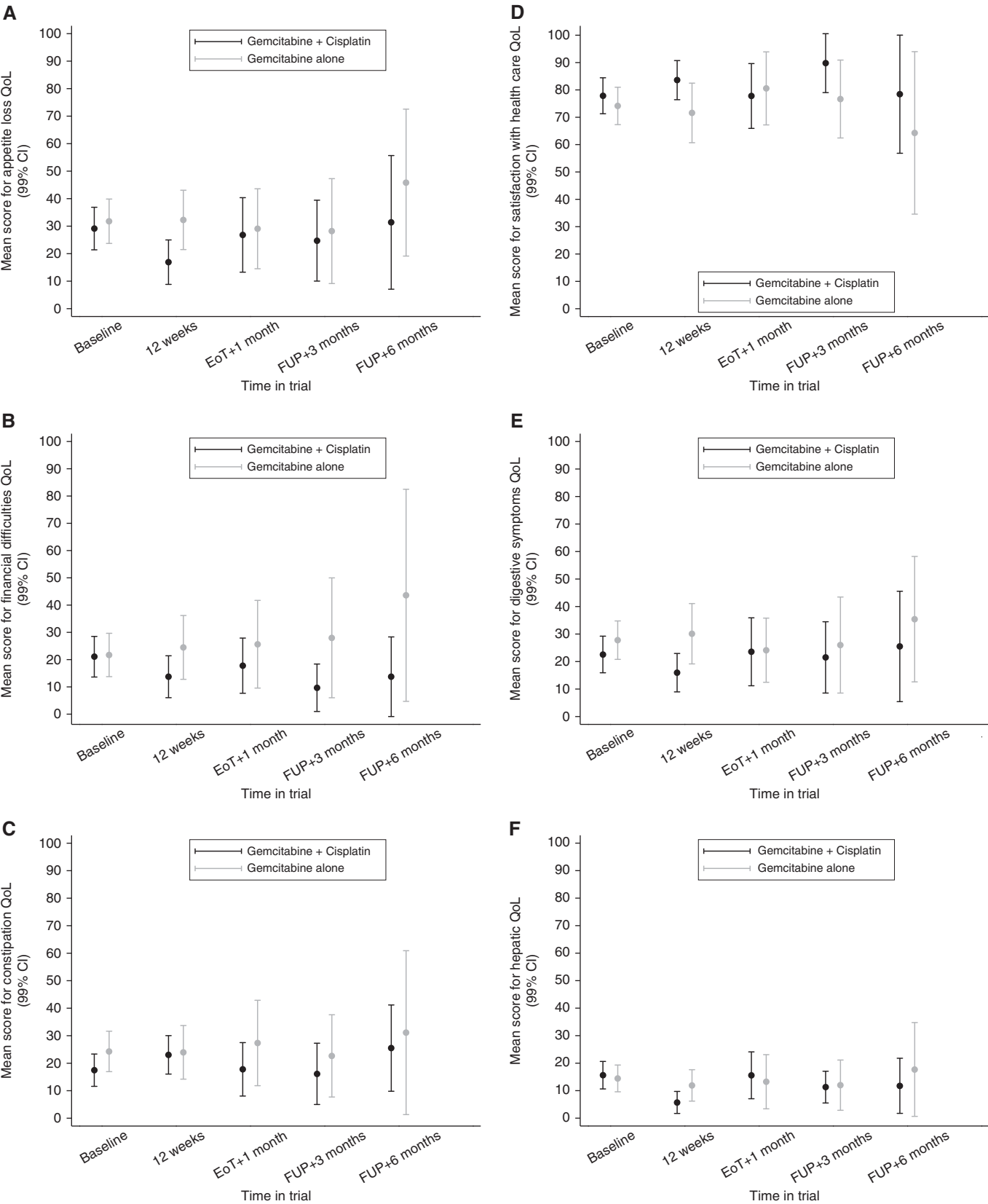


Figure 1. Quality of life across the five measurable time points for six QoL scales. For each score the mean quality of life is provided with its 95% confidence interval. (A–F) Represent appetite loss, financial difficulties, constipation, satisfaction with health care, digestive symptoms and hepatic symptoms, respectively.

**Table 2. Treatment difference in quality of life at 12 weeks, adjusting for quality of life at baseline (analysis of covariance)**

QoL response <sup>b</sup>	Models adjusting for baseline quality of life		Models adjusting for baseline quality of life and baseline characteristics <sup>a</sup>	
	Treatment mean difference <sup>c</sup> in quality of life at 12 weeks <sup>d</sup> (99% CI)	P-value <sup>e</sup>	Treatment mean difference <sup>c</sup> in quality of life at 12 weeks <sup>d</sup> (99% CI)	P-value <sup>e</sup>
<b>Global health status</b>				
Global health	6.9 (−2.5 to +16.3)	0.06	5.9 (−4.0 to +15.8)	0.12
<b>Functional scale</b>				
Social functioning	9.6 (−2.2 to +21.4)	0.04	8.3 (−4.0 to +20.6)	0.08
Emotional functioning	3.3 (−6.5 to +13.2)	0.38	2.3 (−8.0 to +12.7)	0.56
Cognitive functioning	2.4 (−5.9 to +10.7)	0.45	2.8 (−5.8 to +11.3)	0.40
Role functioning	−0.2 (−11.4 to +11.0)	0.96	0.8 (−10.8 to +12.4)	0.86
Physical functioning	−0.4 (−7.9 to +7.1)	0.88	−1.1 (−9.0 to +6.8)	0.73
<b>Symptom scale</b>				
Appetite loss	−15.7 (−27.8 to −3.5)	0.001	−13.2 (−25.8 to −0.55)	0.007
Financial difficulties	−11.6 (−24.6 to +1.3)	0.02	−11.7 (−25.0 to +1.5)	0.02
Nausea and vomiting	−5.4 (−13.2 to +2.4)	0.07	−3.0 (−10.8 to +4.7)	0.31
Pain	−4.8 (−15.2 to +5.6)	0.23	−3.7 (−14.5 to +7.1)	0.37
Insomnia	−4.5 (−16.4 to +7.4)	0.33	−4.9 (−17.4 to +7.7)	0.31
Fatigue	−3.9 (−14.0 to +6.3)	0.32	−3.5 (−14.2 to +7.3)	0.40
Constipation	−1.1 (−13.2 to +11.0)	0.81	0.37 (−11.9 to +12.7)	0.94
Diarrhoea	−0.2 (−9.6 to +9.2)	0.95	−0.02 (−9.8 to +9.8)	0.99
Dyspnoea	4.8 (−6.6 to +16.2)	0.27	5.2 (−6.7 to +17.1)	0.25
<b>Biliary tract cancer-specific</b>				
Satisfaction with health care	12.1 (−0.2 to +24.5)	0.01	11.1 (−1.6 to +23.8)	0.02
Sexual functioning	−4.7 (−22.0 to +12.6)	0.48	−7.2 (−25.5 to +11.0)	0.30
Digestive symptoms	−14.1 (−25.7 to −2.5)	0.002	−13.4 (−25.7 to −0.98)	0.006
Hepatic	−5.6 (−12.1 to +0.9)	0.03	−5.3 (−12.1 to +1.5)	0.04
Pancreatic pain	−3.9 (−12.1 to +4.3)	0.22	−3.5 (−12.0 to +4.9)	0.28
Body image	−3.6 (−15.8 to +8.7)	0.45	−2.0 (−14.7 to +10.8)	0.69
Altered bowel habit	−0.7 (−11.0 to +9.6)	0.86	−1.7 (−12.6 to +9.3)	0.69

<sup>a</sup>Models adjusted for baseline characteristics: gender, disease status, primary tumour site, tumour histology, ECOG performance status, prior therapy and age group.

<sup>b</sup>Scores range from 0–100 for all endpoints. For the global health and functional scales (including satisfaction with health care and sexual functioning) 0 indicates poor health and 100 good health. For all other scales, 0 indicates no symptoms and 100 high level of symptoms.

<sup>c</sup>Treatment mean difference refers to gemcitabine + cisplatin minus gemcitabine alone.

<sup>d</sup>For the global health and functional scales (including satisfaction with health care and sexual functioning) a positive difference indicates that gemcitabine + cisplatin was better and a negative difference indicates that gemcitabine alone was better. For all other scales, a negative difference indicates that gemcitabine + cisplatin was better and a positive difference indicates that gemcitabine alone was better.

<sup>e</sup>P-values (two-sided) are unadjusted for multiple comparisons, so 99% CIs are shown.

results using 50% cut-offs as suggested by Sloan *et al*, 2012. CisGem was compared with Gem in terms of QoL responses at 12 weeks, adjusting for baseline values using ANCOVA (analysis of covariance), which is used to evaluate QoL at 12 months and is meaningful as it represents the median survival point.

Random intercept-slope models are fitted in order to take into account the repeated-measures nature of the QoL data. A separate model is fitted for each QoL subscale (response variable). These are two-level models with level 1 being the series of measurements taken over time within each patient and level 2 being the patient unit (cluster level). Random intercept-slope models include treatment group and number of days in each visit for each patient as fixed-effects covariates. We extended these intercept-slope models by including baseline characteristics as fixed-effects covariates: gender, disease status, primary tumour site, tumour histology, ECOG performance status, prior therapy and age group. We reported 99% CI for analysis of covariance and random intercept-slope models due to multiple testing.

## RESULTS

**Quality of life.** A total of 268 (83%) patients returned at least one QoL form (134 in each arm), though only 259 (80%) returned the baseline form and 134 (41%) of the patients returned the QoL form

at 12 weeks (Supplementary Table S1). Missing data due to deaths and due to other causes are similar between treatment groups, with a slightly higher percentage of missing data due to deaths in the Gemcitabine arm. Only 11 (3%) patients returned all five forms.

Table 1 shows the association between QoL scores and survival. A better survival outcome seems to be related with higher score levels in global health (HR 0.63, 99% CI: 0.44–0.91,  $P=0.001$ ), role functioning (HR 0.77, 99% CI: 0.53–1.11,  $P=0.06$ ), physical functioning (HR 0.56, 99% CI: 0.34–0.92,  $P=0.003$ ) and sexual functioning (HR 0.69, 99% CI: 0.46–1.02,  $P=0.01$ ) at baseline. A worst survival experience seem to be associated with higher baseline score levels in the scales related with appetite loss (HR 1.42, 99% CI: 0.96–2.10,  $P=0.02$ ), nausea and vomiting (HR 1.98, 99% CI: 0.94–4.17,  $P=0.02$ ), pain (HR 1.50, 99% CI: 0.94–2.38,  $P=0.02$ ), digestive symptoms (HR 1.42, 99% CI: 0.90–2.25,  $P=0.05$ ) and pancreatic pain (HR 1.39, 99% CI: 0.90–2.15,  $P=0.05$ ). Supplementary Figure S1A and B show Kaplan–Meier plots for survival outcomes amongst patients who scored high and low in the global health functioning and physical functioning scales, respectively.

Treatment mean differences in the QoL scales at 12 weeks adjusted for baseline (ANCOVA analysis) are presented in Figure 1 and Table 2. The ANCOVA results imply a difference not statistically significant in the direction favouring the combined treatment arm for most of the scales. After controlling for baseline quality of life and baseline characteristics, only appetite loss and

digestive symptoms were statistically significant at the 1% level ( $P=0.007$  and  $P=0.006$ , respectively; Figures 1A and B), both in favour of CisGem. Our findings suggest some evidence of treatment differences in favour of CisGem in hepatic function, financial difficulties and satisfaction with health-care scales (Figure 1C, E and F).

There is no evidence of a treatment effect in the difference in mean QoL scores, over all five time points, for any of the QoL responses at the 1% level (Supplementary Table S2). Responses in the constipation scale showed a difference in the direction favouring the combined treatment arm at a 5% level ( $-6.3$ , 99% CI:  $-13.5$ – $0.9$ ,  $P=0.02$ ). A difference favouring the CisGem arm was seen in digestive symptoms, global health, social functioning, appetite loss, financial difficulties, insomnia and satisfaction with health-care scales, but our findings do not suggest evidence of a statistical difference (Figure 1D and B).

**Long-term survivors.** Survival analysis and analysis of baseline characteristics and treatment of patients by grouped length of follow-up is shown in Table 3. A total of 69 (17%) patients have been followed up for  $\leq 3$  months, 296 (72%) patients between 3–24 months and 45 (11%) patients for  $>24$  months. Median survival among the 45 long-term survivors is 31.4 months. There is a trend between the following factors and survival time: CisGem treatment, disease status and ECOG performance status ( $P<0.001$ ,  $P=0.028$  and  $P<0.001$ , respectively). There is a survival advantage for

patients receiving CisGem compared with Gem (HR: 0.65, 95% CI: 0.53–0.79,  $P<0.001$ ), with 17% of the CisGem patients being followed up for at least 24 months in comparison with 5% of Gemcitabine-alone patients. Our findings suggest that the higher the ECOG performance status the poorer the survival, and that a performance status of 2 is associated with worst prognosis (ECOG 2, HR: 2.35, 95% CI: 1.68–3.28,  $P<0.001$ ). Locally advanced patients have a better survival prognosis than the patients with metastatic disease (HR 1.34, 95% CI: 1.07–1.69,  $P=0.01$ ). A higher percentage of locally advanced patients were followed up for  $>24$  months compared with metastatic disease (14% vs 10%, respectively). Our findings did not show evidence that gender, primary tumour site, tumour histology, prior therapy and age were associated with survival.

**Long-term primary outcome analysis.** With a median follow-up of 9.2 months, 398 (97%) patients have died as of March 2012 compared to 327 when previously reported (Valle *et al*, 2010). Of the 12 patients not known to have died, 9 have been followed up for at least 24 months; the other 3 patients were all lost to follow-up within 6 months of randomisation. As nearly all the patients have died, long-term follow-up can be considered as long-term survival. The median OS was 11.7 months for CisGem and 8.1 months for Gem (HR = 0.65, 95% CI: 0.53–0.79,  $P<0.001$ , Figure 2).

**Table 3. Baseline characteristics and treatment of patients, by grouped length of follow-up**

	Univariate cox model			Follow-up period <sup>a</sup>			P-value <sup>b</sup> (P-value for trend <sup>c</sup> )
	Median survival time (95% CI)	HR (95% CI)	P-value	0–3 months (N = 69) n (%)	3–24 months (N = 296) n (%)	> 24 months (N = 45) n (%)	
Treatment							
Gemcitabine alone	8.1 (7.0–9.1)	1	<0.001	43 (21)	152 (74)	11 (5)	<0.001
Gemcitabine + Cisplatin	11.7 (9.6–14.0)	0.65 (0.53–0.79)		26 (13)	144 (71)	34 (17)	(<0.001)
Gender							
Female	9.6 (8.3–11.1)	1	0.38	35 (16)	155 (72)	26 (12)	0.75
Male	9.1 (7.9–11.7)	1.09 (0.90–1.33)		34 (18)	141 (73)	19 (10)	0.5
Disease status							
Locally advanced disease	13.3 (8.1–15.0)	1	0.01	11 (11)	78 (75)	15 (14)	0.086
Metastatic disease	8.8 (8.1–10.0)	1.34 (1.07–1.69)		58 (19)	218 (71)	30 (10)	0.028
Primary tumour site							
Gallbladder	9.6 (8–11.7)	1	0.93	19 (13)	115 (77)	15 (10)	0.053
Bile duct	8.8 (8–10.7)	0.96 (0.78–1.19)		50 (21)	163 (68)	28 (12)	0.78
Ampulla	11.8 (6.8–14)	1 (0.62–1.62)		0 (0)	18 (90)	2 (10)	
Tumour histology							
Adenocarcinoma	9.6 (8.3–11.1)	1	0.21	61 (16)	273 (72)	43 (11)	0.37
Other	7.2 (4.5–10.8)	1.27 (0.88–1.82)		8 (24)	23 (70)	2 (6)	0.16
ECOG performance status							
0	11.9 (9.7–14.3)	1	<0.001	11 (8)	98 (75)	21 (16)	0.001
1	9.3 (7.9–11)	1.29 (1.04–1.61)		42 (18)	163 (71)	23 (10)	(<0.001)
2	5.7 (3.4–7.1)	2.35 (1.68–3.28)		16 (31)	35 (67)	1 (2)	
Prior therapy							
None	8.0 (6.8–10.1)	1	0.79	20 (20)	66 (66)	14 (14)	0.27
Any prior therapy	9.8 (8.7–11.6)	1.03 (0.82–1.30)		49 (16)	230 (74)	31 (10)	0.94
Age (years)							
23–60	9.3 (8–12.2)	1	0.61	22 (15)	111 (75)	15 (10)	0.23
60–70	9.7 (7.9–11.8)	1 (0.80–1.25)		32 (18)	118 (67)	25 (14)	0.41
70–84	9.1 (7–10.7)	1.13 (0.86–1.48)		15 (17)	67 (77)	5 (6)	

<sup>a</sup>Follow-up time is near enough an exact proxy for survival. Yet, there are 12 patients who did not die. So, although the FUP time and survival time are almost the same they are not exactly the same. That is the reason that we use follow-up time instead survival time.

<sup>b</sup>Note that there are two P-values. The first is for any difference between follow-up duration and covariate groupings; the second is for trend.

<sup>c</sup>A non-parametric test for linear trend developed by Cuzick (1985) has been calculated to assess if the covariates are associated with follow-up time.

<sup>a</sup>Follow-up time is near enough an exact proxy for survival. Yet, there are 12 patients who did not die. So, although the FUP time and survival time are almost the same they are not exactly the same. That is the reason that we use follow-up time instead survival time.

<sup>b</sup>Note that there are two P-values. The first is for any difference between follow-up duration and covariate groupings; the second is for trend.

<sup>c</sup>A non-parametric test for linear trend developed by Cuzick (1985) has been calculated to assess if the covariates are associated with follow-up time.



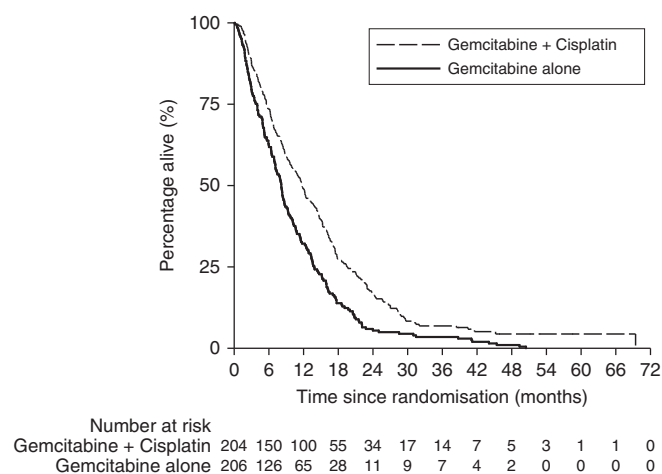


Figure 2. Kaplan-Meier long-term overall survival by treatment arm.

## DISCUSSION

Although ABC-02 has defined the standard of care for BTC patients, the survival benefit is modest and most patients do not survive beyond a year. QoL is therefore pivotal to globally evaluate this benefit, particularly in the context of a disease with multiple symptoms that can often be difficult to manage. Our data demonstrate that QoL is not adversely affected despite a modest non-significant increase in some toxicities such as neutropenia.

Research on QoL in ABC is challenging. Assessing the QoL of ABC patients is critically important in a population who are often unwell from both local (obstructive jaundice, biliary sepsis, bowel obstruction and liver pain) and systemic consequences (malaise, fatigue and depression) of advanced disease. This is the likely reason for missing data (20% at baseline and 59% at 12 weeks) reflecting a common problem of QoL studies in unwell cancer patients. Extant data reflect both a lack of appropriate instruments and study compliance realities. Heffernan *et al* (2002) described the FACT-G scale for hepatobiliary malignancies, but to date it has been used only in pancreas cancer studies with no survival benefit (Rocha Lima *et al*, 2004; Moinpour *et al*, 2010). EORTC QoL scales have been described for liver metastasis (LMC21) (Kavadas *et al*, 2003) and pancreas (PAN26) (Fitzsimmons *et al*, 1999), the latter used here, but are limited by not being BTC specific. It is likely that a recently validated BTC instrument will be used for BTC in the future (EORTC QLQ-BIL21; Friend *et al*, 2011). This is a mostly a combination of PAN26 and LMC21 and requires phase 4 evaluation across multiple ethnic groups before general adoption. Limitations of our data include the missing data (Table 1; Supplementary Table S1) and the assumption that these data are balanced between the treatment arms. Nevertheless, these are the only data describing QoL in the context of a treatment-defining study for ABC and as such set the standard for subsequent investigation.

The majority of long-term outcomes are described in surgical series and there are no published data for the long-term survival of patients presenting with advanced disease. These data describe a cohort of long-term survivors and are consistent with an increasing appreciation that ABC are sensitive to chemotherapy (Eckel *et al*, 2011). Ongoing studies in second and subsequent line therapies will continue to build a therapeutic hierarchy for ABC, such as the UK National Cancer Research Institute ABC-06 study (Lamarca *et al*, 2014). The added efficacy of Cisplatin to gemcitabine across multiple variables including primary tumour site (bile duct, gall bladder and ampulla) is confirmed, suggesting that although they

may be molecularly heterogeneous (Jiao *et al*, 2013) their sensitivity to cisplatin is similar.

## CONCLUSION

The survival benefit of CisGem compared to Gem in ABC is not paralleled by a benefit in QoL. A qualitative description of long-term survivors and the long-term primary outcome analysis supports the survival benefit. We recommend that CisGem remains the standard of care for ABC.

## ACKNOWLEDGEMENTS

We thank all participating patients and their families without whom these clinical studies would not have been possible. This work was supported by the following: ABC-02 was an investigator-initiated study sponsored by UCL Clinical Trials Unit, funded by Cancer Research UK with gemcitabine provided by Lilly Oncology (unrestricted grant). JB is partly supported by the UCLH/UCL Biomedical Research Centre. AL is supported by a CRUK grant C444/A15953 to the UCL CRUK trials centre.

## CONFLICT OF INTEREST

The authors declare no conflict of interest.

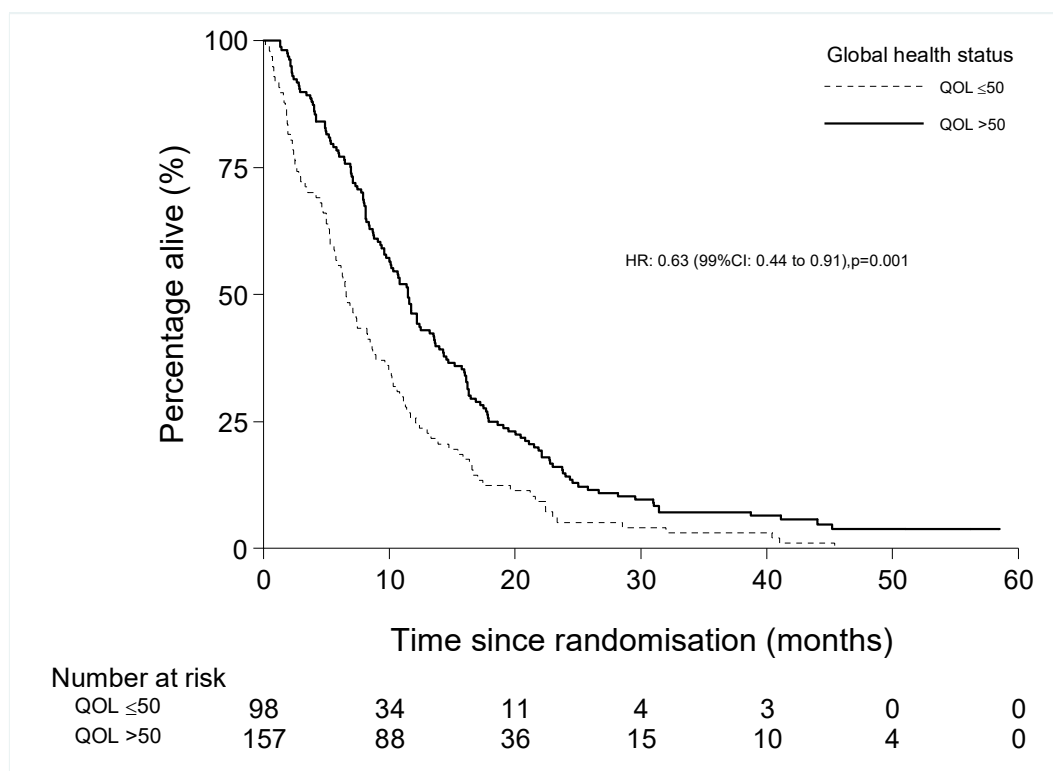
## REFERENCES

- Aaronson NK, Ahmedzai S, Bergman B, Bullinger M, Cull A, Duez NJ, Filiberti A, Flechtner H, Fleishman SB, Haes J. C. J. M. D., Kaasa S, Klee M, Osoba D, Razavi D, Rofe PB, Schraub S, Sneeuw K, Sullivan M, Takeda F (1993) The European Organization for Research and Treatment of Cancer QLQ-C30: A quality-of-life instrument for use in International Clinical Trials in Oncology. *J Natl Cancer Inst* **85**: 365–376.
- Cuzick J (1985) A Wilcoxon-type test for trend. *Stat Med* **4**(1): 87–90.
- de Groen PC, Gores GJ, Larusso NF, Gunderson LL, Nagorney DM (1999) Biliary tract cancers. *N Engl J Med* **341**: 1368–1378.
- Eckel F, Brunner T, Jelic S. ESMO Guidelines Working Group (2011) Biliary cancer: ESMO Clinical Practice Guidelines for diagnosis, treatment and follow-up. *Ann Oncol* **22**: vi40–vi44.
- Fitzsimmons D, Johnson CD, George S, Payne S, Sandberg AA, Bassi C, Beger HG, Birk D, Büchler MW, Dervenis C, Fernandez Cruz L, Friess H, Graham AL, Jeekel J, Laugier R, Meyer D, Singer MW, Tihanyi T (1999) Development of a disease specific quality of life (QoL) questionnaire module to supplement the EORTC core cancer QoL questionnaire, the QLQ-C30 in patients with pancreatic cancer. *Eur J Cancer* **35**: 939–941.
- Friend E, Yadegarfar G, Byrne C, Johnson CD, Sezer O, Pucciarelli S, Pereira SP, Chie WC, Banfield A, Ramage JK (2011) Development of a questionnaire (EORTC module) to measure quality of life in patients with cholangiocarcinoma and gallbladder cancer, the EORTC QLQ-BIL21. *Br J Cancer* **104**: 587–592.
- Heffernan N, Cella D, Webster K, Odom L, Martone M, Passik S, Bookbinder M, Fong Y, Jarnagin W, Blumgart L (2002) Measuring health-related quality of life in patients with hepatobiliary cancers: the functional assessment of cancer therapy–hepatobiliary questionnaire. *J Clin Oncol* **20**: 2229–2239.
- Jiao Y, Pawlik TM, Anders RA, Selaru FM, Streppel MM, Lucas DJ, Niknafs N, Guthrie VB, Maitra A, Argani P, Offerhaus GJA, Roa JC, Roberts LR, Gores GJ, Popescu I, Alexandrescu ST, Dima S, Fassan M, Simbolo M, Mafficini A, Capelli P, Lawlor RT, Ruzzenente A, Guglielmi A, Tortora G, de Braud F, Scarpa A, Jarnagin W, Klimstra D, Karchin R, Velculescu VE, Hruban RH, Vogelstein B, Kinzler KW, Papadopoulos N, Wood LD (2013) Exome sequencing identifies frequent inactivating mutations in BAP1, ARID1A and PBRM1 in intrahepatic cholangiocarcinomas. *Nat Genet* **45**: 1470–1473.

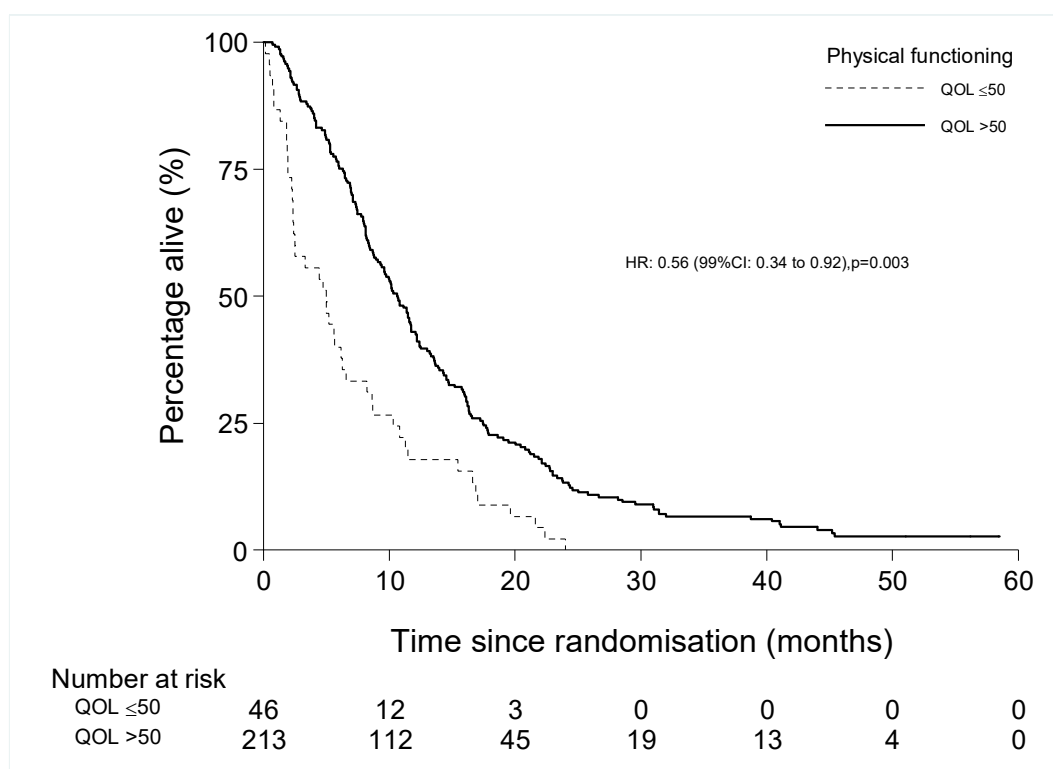
- Kavadas V, Blazeby JM, Conroy T, Sezer O, Holzner B, Koller M, Buckels J (2003) Development of an EORTC disease-specific quality of life questionnaire for use in patients with liver metastases from colorectal cancer. *Eur J Cancer* **39**: 1259–1263.
- Lamarca A, Palmer D, Wasan H, Ryder WD, Davies L, Flight H, Rogan J, Hubner R, Bridgewater JA, Valle JW (2014) 748TiPABC-06: a randomised phase III, multi-centre, open-label study of active symptom control (ASC) alone or ASC with oxaliplatin / 5-FU chemotherapy for patients with locally advanced / metastatic biliary tract cancers (ABC) previously treated with cisplatin / gemcitabine chemotherapy. *Ann Oncol* **25**: iv252.
- Moinpour CM, Vaught NL, Goldman B, Redman MW, Philip PA, Millwood B, Lippman SM, Seay TE, Flynn PJ, O'Reilly EM, Rowland KM, Wong RP, Benedetti J, Blanke CD (2010) Pain and emotional well-being outcomes in Southwest Oncology Group-Directed Intergroup Trial S0205: a phase III study comparing gemcitabine plus cetuximab versus gemcitabine as first-line therapy in patients with advanced pancreas cancer. *J Clin Oncol* **28**: 3611–3616.
- Okusaka T, Nakachi K, Fukutomi A, Mizuno N, Ohkawa S, Funakoshi A, Nagino M, Kondo S, Nagaoka S, Funai J, Koshiji M, Nambu Y, Furuse J, Miyazaki M, Nimura Y (2010) Gemcitabine alone or in combination with cisplatin in patients with biliary tract cancer: a comparative multicentre study in Japan. *Br J Cancer* **103**: 469–474.
- Rocha Lima CM, Green MR, Rotche R, Miller WH, Jeffrey GM, Cisar LA, Morganti A, Orlando N, Gruia G, Miller LL (2004) Irinotecan plus gemcitabine results in no survival advantage compared with gemcitabine monotherapy in patients with locally advanced or metastatic pancreatic cancer despite increased tumor response rate. *J Clin Oncol* **22**: 3776–3783.
- Sloan JA, Zhao X, Novotny PJ, Wampfler J, Garces Y, Clark MM, Yang P (2012) Relationship between deficits in overall quality of life and non-small-cell lung cancer survival. *J Clin Oncol* **30**: 1498–1504.
- Valle J, Wasan H, Palmer DH, Cunningham D, Anthoney A, Maraveyas A, Madhusudan S, Iveson T, Hughes S, Pereira SP, Roughton M, Bridgewater J. The Abc-02 Trial Investigators (2010) Cisplatin plus gemcitabine versus gemcitabine for biliary tract cancer. *N Engl J Med* **362**: 1273–1281.
- Valle JW, Furuse J, Jitlal M, Beare S, Mizuno N, Wasan H, Bridgewater J, Okusaka T (2013) Cisplatin and gemcitabine for advanced biliary tract cancer: a meta-analysis of two randomised trials. *Ann Oncol* **25**: 391–398.
- Valle JW, Wasan H, Johnson P, Jones E, Dixon L, Swindell R, Baka S, Maraveyas A, Corrie P, Falk S, Gollins S, Lofts F, Evans L, Meyer T, Anthoney A, Iveson T, Highley M, Osborne R, Bridgewater J (2009) Gemcitabine alone or in combination with cisplatin in patients with advanced or metastatic cholangiocarcinomas or other biliary tract tumours: a multicentre randomised phase II study—The UK ABC-01 Study. *Br J Cancer* **101**: 621–627.

This work is published under the standard license to publish agreement. After 12 months the work will become freely available and the license terms will switch to a Creative Commons Attribution-NonCommercial-Share Alike 4.0 Unported License.

Supplementary Information accompanies this paper on British Journal of Cancer website (<http://www.nature.com/bjc>)



Appendix figure 1a



Appendix figure 1b



Appendix table 1. Number of quality of life forms received, by treatment arm <sup>1</sup>

QoL form received	No. of patients (%)					
	Gemcitabine + Cisplatin N=162			Gemcitabine alone N=162		
	QoL available data	Missing data not due to deaths	Missing data due to deaths	QoL available data	Missing data not due to deaths	Missing data due to deaths
<b>Baseline</b>	129 (80%)	7 (4%)	26 (16%)	130 (80%)	5 (3%)	27 (17%)
<b>12 week assessment</b>	70 (43%)	20 (12%)	72 (44%)	64 (40%)	22 (14%)	76 (47%)
<b>End of treat. + 1 month</b>	46 (28%)	17 (10%)	99 (61%)	39 (24%)	14 (9%)	109 (67%)
<b>Follow-up + 3 months</b>	31 (19%)	11 (7%)	120 (74%)	26 (16%)	8 (5%)	128 (79%)
<b>Follow-up + 6 months</b>	17 (10%)	8 (5%)	137 (85%)	16 (10%)	3 (2%)	143 (88%)

<sup>1</sup> Quality of life forms were only requested from the 324 ABC-02 patients. The percentage of forms received is compared against the total number of patients from the ABC-02 study for whom the QoL forms were requested

**Appendix Table 2. Repeated measures random intercept and random slope models for quality of life responses based on the EORTC QLQ-C30 and on the Pancreatic Cancer module (EORTC QLQ-PAN-26)**

QoL response <sup>1</sup>	Number of evaluable patients <sup>2</sup> (CisGem/Gem alone)	Models with treatment group and number of days in each visit as fixed effects covariates		Models with treatment group, number of days in each visit and baseline covariates <sup>3</sup> as fixed effects covariates	
		Difference between treatment means <sup>4</sup> (99% CI)	p-value <sup>5</sup>	Difference between treatment means <sup>4</sup> (99% CI)	p-value <sup>5</sup>
Global health status					
Global health	134/133	2.0 (-4.2 to 8.1)	0.41	0.9 (-4.7 to 6.6)	0.68
Functional scale					
Social functioning	133/133	4.0 (-4.6 to 12.5)	0.23	2.0 (-5.9 to 9.8)	0.52
Emotional functioning	134/133	-0.2 (-7.2 to 6.8)	0.94	-0.6 (-7.4 to 6.2)	0.82
Cognitive functioning	134/133	-1.9 (-8.2 to 4.5)	0.45	-2.5 (-8.6 to 3.6)	0.29
Role functioning	134/133	2.3 (-6.7 to 11.3)	0.51	0.3 (-8.0 to 8.7)	0.92
Physical functioning	134/134	1.6 (-4.9 to 8.1)	0.54	0.4 (-5.4 to 6.1)	0.87
Symptom scale					
Appetite loss	132/134	-5.6 (-14.6 to 3.5)	0.11	-4.6 (-13.1 to 3.9)	0.16
Financial difficulties	132/133	-4.7 (-13.8 to 4.4)	0.18	-3.4 (-12.0 to 5.2)	0.31
Nausea and vomiting	134/134	-0.6 (-5.9 to 4.8)	0.79	0.1 (-4.9 to 5.0)	0.97
Pain	134/134	-3.2 (-11.5 to 5.0)	0.31	-1.6 (-9.1 to 5.9)	0.58
Insomnia	134/134	-5.2 (-14.3 to 4.0)	0.15	-4.9 (-13.9 to 4.2)	0.16
Fatigue	134/134	-1.4 (-8.6 to 5.7)	0.6	0 (-6.5 to 6.4)	0.99
Constipation	134/133	-7.2 (-14.8 to 0.5)	0.02	-6.3 (-13.5 to 0.9)	0.02
Diarrhoea	133/133	1.5 (-5.0 to 8.1)	0.54	2.1 (-4.4 to 8.5)	0.41

Dyspnoea	134/134	1.6 (-5.6 to 8.8)	0.57	2.2 (-4.8 to 9.2)	0.42
----------	---------	-------------------	------	-------------------	------

### **Biliary tract cancer-specific**

Satisfaction with health care	133/132	4.9 (-2.5 to 12.4)	0.09	5.0 (-2.2 to 12.2)	0.07
Sexual functioning	117/120	3.4 (-9.0 to 15.8)	0.48	1.5 (-10.7 to 13.8)	0.75
Digestive symptoms	133/134	-6.6 (-14.7 to 1.6)	0.04	-5.5 (-13.3 to 2.2)	0.07
Hepatic	133/134	-0.6 (-5.6 to 4.4)	0.76	0.2 (-4.6 to 5.1)	0.91
Pancreatic pain	133/134	-1.0 (-8.2 to 6.2)	0.72	-0.1 (-6.8 to 6.6)	0.97
Body image	132/134	-0.4 (-8.8 to 7.9)	0.89	0.9 (-7.1 to 8.9)	0.78
Altered bowel habit	133/134	1.2 (-6.0 to 8.5)	0.66	1.5 (-5.8 to 8.7)	0.61

---

<sup>1</sup> Scores range from 0 to 100 for all endpoints. For the global health and functional scales (including satisfaction with health care and sexual functioning) 0 indicates poor health and 100 good health. For all other scales, 0 indicates no symptoms and 100 high level of symptoms.

<sup>2</sup> Evaluable patients are the ones with no missing data in the QoL response and in the fixed effects covariates. The models not adjusted for baseline characteristics have the same number of evaluable patients as the models adjusted for baseline characteristics. This is because those patients did not have missing data for the baseline covariates account in the models.

<sup>3</sup> Baseline covariates: gender, disease status, primary tumour site, tumour histology, ECOG performance status, prior therapy, age group

<sup>4</sup> Treatment difference refers to gemcitabine + cisplatin *minus* gemcitabine alone. For the global health and functional scales (including satisfaction with health care and sexual functioning) a positive difference indicates that gemcitabine + cisplatin was better and a negative difference indicates that gemcitabine alone was better. For all other scales, a negative difference indicates that gemcitabine + cisplatin was better and a positive difference indicates that gemcitabine alone was better.

<sup>5</sup> *P* values (two-sided, calculated using a repeated measures analysis) are unadjusted for multiple comparisons, so 99% CIs are given.